

HAW CREEK

COMMUNITY ASSOCIATION

Winter 2023

Landmark Property Changing Ownership

In the Haw Creek valley there are few properties more emblematic of our agricultural heritage than 767 New Haw Creek Road. The 26-acre parcel, formerly owned by Harry Burnett and his daughter Margaret King, both now deceased, is located between the Bullman Park ballfields and the entrance to Happy Valley. With wooded acreage and open pasture bisected by our namesake Haw Creek, this rare and unique property, when sold, will likely be subject to residential development. Existing zoning would allow roughly four houses to be built per acre.



An HCCA survey on growth and development, published in our Winter 2022 newsletter, found broad support (84.5%) for preservation of open spaces when the opportunity presents itself. For this reason HCCA leadership has reached out to estate representatives. The message we received is that the property will soon be marketed at a price in the \$3M range.



Are you a member? As an all-volunteer nonprofit, we rely on people who live in the community for their support through participation in events, volunteer efforts, and financial donations. Your \$20 membership dues are an investment in Haw Creek, the place we call home. **Please join us by becoming a member at www.hawcreekavl.com** or by mailing a check to HCCA, PO Box 9193, Asheville, NC 28815. Thank you!

The one sure way to control what happens to this property is to buy it. The community association hopes to find investors willing to partner to conserve at least some of the property, particularly the pasture area along New Haw Creek Road. An option called a Conservation Easement would ensure protection of the open pasture area and allow for future public recreational use. If interested in learning more, please contact association president Chris Pelly at chrispelly4asheville@gmail.com.

Masters Park Improvements Nearly Complete

The 'Masters Park Challenge' that started in 2021, is finally nearing the finish line. Our community fundraising campaign, to which over 80 residents generously contributed more than \$50k, has enabled us to add an off-road parking lot to this nine-acre park off Maple Drive. With a trail that connects to the Blue Ridge Parkway and the Mountains-to-Sea Trail, valley residents have an easy-access recreation spot, now with much-needed off-road parking. Special thanks to valley resident Bernard Arghiere for his invaluable leadership of this project.



President's Message

Greetings, as the association continues to work on a variety of projects to improve the Haw Creek community, it appears 2023 will be the year that construction finally begins on the extension of the New Haw Creek Road sidewalk. In addition, we're hopeful the Beverly Road pedestrian bridge across Haw Creek will be completed. Same for improvements to Masters Park off Maple Drive. The big unknown is whether we can also preserve any of the 26-acre Burnett property, the front page story in this newsletter.



All these projects are designed to balance ongoing growth in residential housing with improvements that benefit all residents. This takes focused and consistent advocacy—plus your help. As an all-volunteer association made up of Haw Creek neighbors, we need your support. Please become a member and consider running for a leadership position. Six of our 12 member board are up for election at the upcoming annual meeting on March 14th at 7 pm in the East Asheville Library.

We're also about building community connections. Look for news soon about our spring yard sale, cleanup projects, another edition of Haw Creek's Hidden History, and more. Become a member, and we'll alert you to all our programs. Stay connected by liking us on Facebook and following us on Instagram and Nextdoor.

Thanks, Chris Pelly



Facebook



Nextdoor



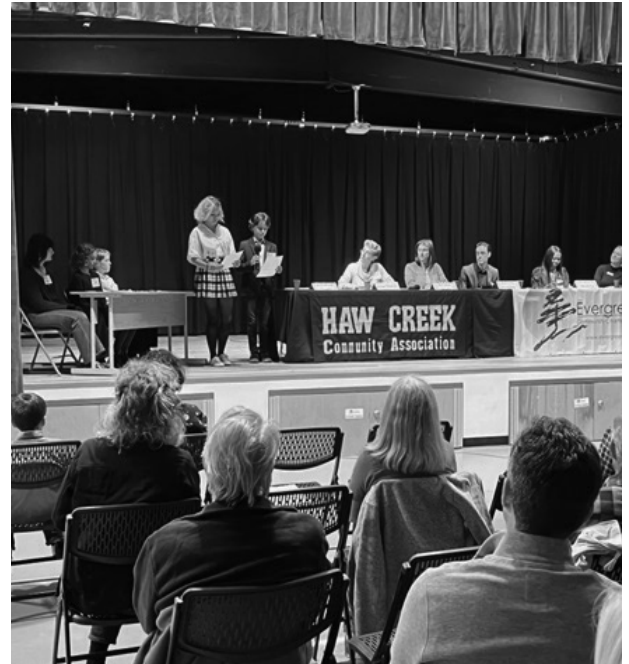
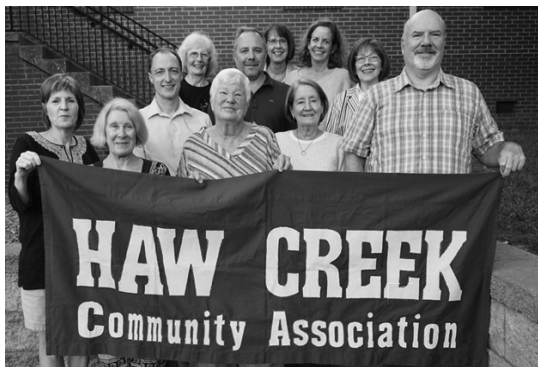
Instagram

HCCA Annual Meeting March 14th - You're Invited!

Want to help set priorities for neighborhood improvements? Want to learn more about how to make a difference at the local level? Want to meet your neighbors? Then consider this your invitation to attend the annual meeting of the Haw Creek Community Association on Tuesday, March 14, 2023 at 7:00 pm at the East Asheville Library. We'll be reporting on various projects and electing six members to the 12-member board of directors, and end with a dessert social. It's a fun way to connect so please plan to join us.

The 2022-2023 Haw Creek Community Association leadership team includes Jim Brunner, Debbie Francis, Sarah Hess

(Secretary),
Christina Maggi,
Barber Melton,
Susan Michael
(Vice-President),
Leslie Morris,
Chris Pelly
(President), Renate
Rikker, Pam Seale
and Phil Trunnell
(Treasurer).



Fall 2022 Candidates Forum

Asheville City Council candidates visited Haw Creek last fall for a candidates forum co-sponsored by HCCA and Evergreen Community Charter School. Students ran the show questioning candidates and learning first-hand about civic engagement.

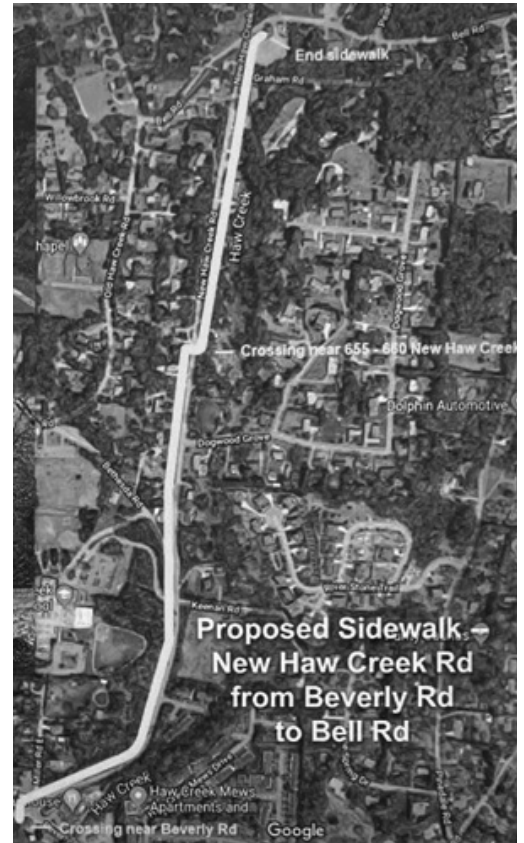
New Haw Creek Sidewalk Extension Coming in 2023

The longest community development project in Haw Creek history—a new 4,000-foot sidewalk on New Haw Creek Road—has yet to break ground. Approved by Asheville voters as part of a 2016 bond referendum, the New Haw Creek Road sidewalk extension will run between Beverly and Bell roads—connecting two schools, the ballfields and pool, our commercial district, plus Haw Creek Park, the library, and Tunnel Road—enabling residents to walk safely between these destinations.

We asked Jade Dundas, Capital Projects Director with the City of Asheville, for a project update and received the following response:

“We are presently in the process of acquiring right of way in order to construct this project. Work continues with our design consultant to finish up the design and submit the plans for final DOT review. Considering the remaining steps in design, we anticipate that the project will be bid by May of 2023.... The project will begin soon after bidding and awarding in May. Construction is expected to take one year and the project will be completed by June 2024.”

The City recognizes that this is something the community has been anxiously anticipating and they’re requesting our patience. We will continue to follow up and report any new developments on this long-awaited project.



What’s up with the Beverly Road Pedestrian Bridge?

We have been working to overcome bureaucratic hurdles to complete the long sought footbridge over Haw Creek at Beverly Road. After challenges due to FEMA flood regulations on the original bridge design, we have worked with City staff on a redesign that will not impede water flow during large storm events. This new design is currently being finalized and will soon be submitted to the City for permitting and construction.

The footbridge over the creek will provide safe passage for people walking between businesses and the parking lot across the creek. Presently, crossing the creek requires walking on Beverly Road, a dangerous situation.

Adopt a Storm Drain in Haw Creek

Pollution from stormwater runoff is the biggest threat to clean water in urban streams. Storm drains get clogged with debris, litter, leaves, and grass clippings, all of which pollute our Haw Creek watershed, which affects our everyday water quality.



Before the next heavy rain arrives, take a look at the closest storm drain in your neighborhood and think about adopting it! Checking the drain in between rain events and keeping it clear of litter and debris will help improve water quality and prevent street flooding.

Renee Fortner, Watershed Resources Manager at **Riverlink**, shared details on the recent addition of Haw Creek to the city-wide **Adopt-A-Storm Drain** program at an event hosted by HCCA last October. To date, 20 storm drains have been adopted in Haw Creek, including seven by students at Evergreen Community Charter School.

Please contact waterresources@riverlink.org to get more information about adopting your own storm drain and helping protect our local watershed.



Haw Creek Community Association
PO Box 9193
Asheville, NC 28815



The fall community yard sale was a big success. Be sure to join us for the spring yard sale coming May 6th.



A Glimpse from the Past

Haw Creek native Edward Byas recalls working at his father's gas station as a teenager. "For customers buying gas, my dad required I check the oil and wash the windshield and leave no streaks." His father Harry Byas operated the business from the 1930s to 1950s. Do you recognize the location at the intersection of Beverly and New Haw Creek Road?