

Haw Creek

Community Association Newsletter

Get Down & Dirty

The HCCA's litter clean-up is Saturday, March 29th from 9 AM until Noon. We'll clean the main entrance (Tunnel Rd into Old & New Haw Creek Rds) including the creek banks. We are asking that as many people as possible participate because, as I am sure you have noticed, a significant amount of litter has accumulated there since last year. Meet at the parking lot of the Ball Field at Bell & Haw Creek Roads and car pool to the entrance. Wear sturdy shoes, work cloths (long sleeves recommended) and bring work gloves if you have them. We will have safety vests, gloves, and trash bags on site. For more information contact Bob Pierce 404-406-5755.

Memorial Day Bike Parade

By Beth Jezek

It's not too early to start organizing our Memorial Day Children's Bicycle Parade. We had an amazing time last year! Please plan to attend and admire the kids' bikes decorated in patriotic colors and streamers.

We are finalizing plans to hold this year's parade at the VA Hospital so that our retired soldiers can enjoy it.

Much goes in to planning this event and we are looking for volunteers to help with the following activities:

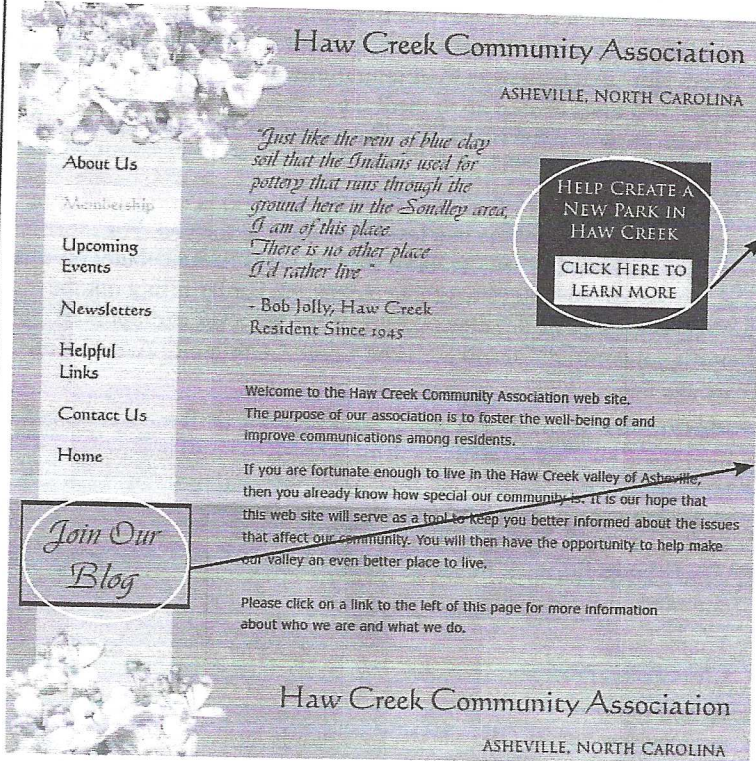
- Solicit businesses for prizes
- Distribute fliers
- Decorate parade area
- Bake/purchase cookies
- Make/purchase lemonade
- Assist with traffic/bicycle control on Memorial Day
- Assist with registering children before parade start

to volunteer or for questions, please contact Beth Jezek 299-0914

DON'T MISS THIS GREAT COMMUNITY EVENT!!!

HCCA's Updated Website!

Our beautifully revamped website is up and running. We owe a HUGE thank you to Jennifer Spector for volunteering to take on this mountainous task. The site is both pretty and super functional. Please make sure to let Jennifer know how much we appreciate her skills.



Here's a peek at the home page. Check out two of the exciting new features of this website.

1. A link to make an online **donation** to help with the Maple Drive property purchase. *For more ways to donate or make a pledge to donate us the mail-in donation/pledge from below.*

and
2. Our **blog** (similar to a community bulletin board/message center). This is where you get to add your thoughts. Do you have an event to announce, or maybe a sighting of the neighborhood bear...This is the place to post it. There are step by step instructions on how to get started on the website. It's easy, let's get connected!

www.hawcreeknc.org Same address with a whole new look! www.hawcreeknc.org

Mail-in Maple Dr Park Donation/Pledge Form

PLEDGE CARD

Name _____ Address _____

City/State/Zip _____ E-mail _____

Telephone _____ Pledge Amount _____

Pledge may be paid now and anytime up to June 30, 2008

Contributions made out to: Haw Creek Community Association, PO Box 9193, Asheville NC 28815

St. John's Episcopal Ch.
290 Old Haw Creek Rd.
By Barbara Melton

Mark your calendars now for a very special event at St. John's Episcopal Church, on April 5th at 7:30PM. CAIM is an a capella Celtic duo of Scotland's Heather Innes & Ireland's Jacynth Harrill who sing prayers in the Celtic tradition. Some are ancient and some are modern. They also will be singing traditional Irish & Scottish songs and stories. Tickets to the concert are \$10 to be split between CAIM and the Chaplaincy Program at the Black Mountain Women's Correctional Center. CAIM will have CD's for sale after the concert. Everyone is welcome.

ON Sunday April 6th, CAIM will be at St. John's to participate in our regular Sunday Morning worship service but it will be a Celtic Eucharist Service. Everyone is welcome to worship with us. Service is at 11AM.

ON April 20th at 4:00PM at St. John's Episcopal Church, a free organ concert with St. John's choir and other musicians will be held to say goodbye to our Pipe organ. We will be removing it and offering it for sale to make room for a new Rodgers Digital organ that has been donated. A reception will be held after the concert. Everyone is welcome and St. John's looks forward to meeting and greeting our neighbors.

President's Message- Maple Dr Park Plan Advances

Dear Neighbors,

Your community association is pleased to report Buncombe County commissioners have voted to join our effort to create a nine acre park on Maple Drive. Specifically, commissioners voted March 18th to contribute \$240,000 towards the purchase price of the Maple Drive property. This follows last November's vote by Asheville City Council to do the same and also contribute \$240,000.

By their action the commissioners helped breathe life into the idea of preserving this property as a park. We are grateful to both the commissioners and city council for their willingness to partner with the Haw Creek community.

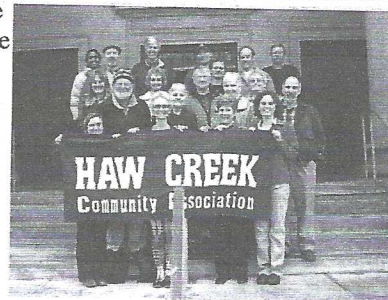
In order to demonstrate our commitment to this project, our pledge to them was that we would raise the remaining third of the funds needed if they were to each contribute one third of the purchase price. Now that they have their commitment, it is time for Haw Creek residents to step up to meet ours. The good news is that we have already raised \$140,000 of our \$240,000 commitment. We still have about \$100,000 to go.

We understand every family's financial situation is unique. We are asking you to contribute at a level manageable for you. For those able to support this project there are two ways to contribute; on-line at our secure website(www.hawcreeknc.org) or by filling out the pledge card in this newsletter. And, as we are a tax exempt non-profit, all contributions to the Haw Creek Community Association are tax deductible.

Plans for the Maple Drive site call for creating a hiking trail linking the Haw Creek valley with the Blue Ridge Parkway and the Mountains-to-the-Seas Trail. For a map of the site and more information about the park proposal, please visit our website and review the winter 2008 newsletter which contains more information.

Thank you,
Chris Pelly, President HCCA

*Showing our HCCA pride on
the courthouse steps after the
victory vote!*



East Asheville Recreation Club Pool News:

www.eastashevillepool.com

~Phone will be turned on April 1st

~Applications will be mailed and on our website April 1st.

~Swim team sign ups are April 8th 3:45-5:30 and April 11th from 4-7 pm at Groce Methodist Church, cost is \$85.00 + suit

~Opening Day is May 24th at 10:30am

~Currently accepting applications for Lifeguards and concession workers. Please apply online at www.eastashevillepool.com

~Stock Holders meeting is March 20th, 7pm at Haw Creek School Little Theater. Snow date is April 3rd.

~Proxy mailed to stockholders March 6th. You can also download the proxy on the website and email it back if you can not attend. It is very important we receive your vote.

~Check out the website calendar for information and important dates at www.eastashevillepool.com

~Swim lesson dates will be announced soon.

Cub Scouts

Pack 53

Meet on Tuesday evenings from 6:30-7:30pm at Oteen United Methodist, Browndale Rd. For more information email pack53@earthlink.net.



2008 Meeting Schedule

Thurs, April 24th, 7:00pm

Location: St. John's Church
Agenda: Maple Dr Fund Raising Program: Help Minimize the Mosquito Population By Becky Smucker

Thurs, July 24th, 7:00pm

Location: St. John's Church
Agenda:
Program: TBA

Thurs, Oct 23th, 7:00pm

Location: St. John's Church
Agenda:
Program: TBA

*Any or all of the above are subject to change at any time. Please check calendar with each issue for any changes or check the website.

Newsletter layout by:
Amy McCrea

Printed by:
Biltmore Press Inc.
Printed on an IGEN Digital Press

Haw Creek Community Association Board of Directors

President	Chris Pelly	95 Cisco Road	298-5299	cpelly@buncombe.main.nc.us
Vice President	Beth Jezek	62 Cisco Road	299-0914	bjezek@juno.com
Secretary	Todd Tamplin	505 Old Haw Creek Road	296-8380	tjtamplin@charter.net
Treasurer	Vickie Gaddy	440 Governors View Road	275-2680	vjones@charter.net
Newsletter	Amy McCrea	433 Governors View Road	299-1831	amymccrea@charter.net
	Ed Seel	107 Maple Drive	298-5413	edandpat@bellsouth.net
Website	Jennifer Spector	90 Bell Rd	296-1506	jendavespector@yahoo.com
	Bob Pierce	12 Munn Dr	298-6723	rmp342006@yahoo.com

MEMBERSHIP: Membership in the Association shall be available to residents, as well as property owners, in the Haw Creek community and there shall be one class of membership.

DUES: Twelve dollars (\$12) paid once annually in January. Make your check to HCCA and mail to:
HCCA; P.O. Box 9193; Asheville, NC 28815
Please include: member names, postal address, phone number, and e-mail address.

Visit our new website at www.hawcreeknc.org.

SCHOOL NEWS

Haw Creek

Elementary School

www.hces.buncombe.k12.nc.us/

- March 24-28: Spring Break
- April 3: Young Author's Day and a performance by Hobey Ford's Puppets
- April 9: Orientation for incoming kindergarten students, 4:00-5:00
- April 14: Parent Math Night, K-2, 6:00-8:00
- April 24: Science Fair Open House
- May 2: Kindergarten registration

Charles C. Bell

Elementary School

www.ccbes.buncombe.k12.nc.us/

Spring Carnival

Saturday, April 19th

Fun, Food, Games, Book Sales, Prizes, and Inflatables!

Mark your calendar for the best fun all year. Outside in the field behind the school

If you or your business are interested in making a donation to help with the Carnival, our biggest fund raiser of the year, please contact April Thomas, april.thomas@med.va.gov or the school at 298-3789.

Evergreen Community Charter School

www.evergreencs.org

Evergreen in partnership with Handmade in America presents:

"Ha Ru Ga Kita"

"Welcome Spring"

featuring Japanese musician Akira Satake. A benefit for Evergreen's Music and Science Olympiad programs.

When: Thurs, March 20, 5:30-8:00pm

Where: Evergreen Community Charter School, 50 Bell Road off of New Haw Creek Road.

5:30 - 6:30 Spring Dinner- served by the Science Olympiad team

6:30 Spring Concert in the Maureen Motley Theater (in the gym)

Featuring the EMBE Marimba Band and the Akira Satake Band
percussionist, Billy Jonas, cellist, Julia Weatherford and violinist, Duncan Wickel) \$3.00 students, \$5.00 adults, maximum \$10.00 per family. Call 298-2173 for more info.

Haw Creek Native: Interview with Hazel Tilson

By Chris Pelly

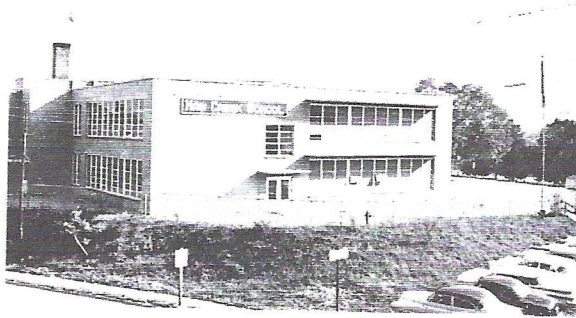


Hazel Tilson in 'office' wear in the 1940's

Technically, Hazel Tilson is not a Haw Creek native although she has been here longer than many of us. Born in McDowell County in 1920, Mrs. Tilson arrived in Asheville shortly after graduating high school in 1937. Before there was A-B Tech, there was Blantons Business School from which Mrs. Tilson studied to become a bookkeeper and a stenographer. She met her future husband Clyde in 1940 and was married in 1941. While he served 44 months overseas during World War II they corresponded every day. By day, she held various bookkeeping positions and by night earned her room and board by caring for children in private homes. Finally, with the war over and reunited with her husband, they began to prepare to build their life together.



When did you arrive in Haw Creek? We'd been looking for a place in the country for a long while and finally found in 1950 the lot on which our home is built. We bought the 1.8 acre lot for \$1,800 and built and moved into our new home in May, 1951. Clyde and I raised two boys in this home.



HAW CREEK SCHOOL
1959-60
Asheville, North Carolina

Haw Creek School as it looked in the late 50s. It was located on the site that is now Beaucatcher Cinema on Tunnel Rd.

What was Haw Creek like at that time? Our house sits opposite the entrance to the Dogwood Grove subdivision. Back then Dogwood Grove was the Jones farm with open fields and apple trees. Haw Creek had several large farms at that time. Today where Pressley and Pershing Roads are was then a large farm. Same for where the Spruce Hill Apartments are presently. Back then New Haw Creek Rd was only paved about half-way up the valley. We also grew a large garden and canned and froze much of what we grew. If we had to buy at the store it was usually at the A&P supermarket where the 'Play it Again Sports' is now located. And of course there was Millers Store. The older folks would call in their order and they would deliver it.

Also, if you or someone you know, has a Haw Creek history story to tell and would like to be profiled in a future interview, please contact Chris Pelly (298-5299).

Meet Your New HCCA Board

Here is your new HCCA board for 2008. We have some new faces and several returning members. It's going to be a great year. Come out and get to know us. Lets work together to make it the best year yet.

From Left to Right:

- Chris Pelly (President),
- Vickie Gaddy (Treasurer),
- Todd Tamplin (Secretary),
- Amy McCrea (Newsletter),
- Beth Jezek (Vice President),
- Jennipher Spector (Website)

not pictured: Ed Seel and Bob Pierce



Haw Creek Community Association
PO Box 9193
Asheville NC 28815

NON PROFIT ORG.
US POSTAGE PAID
ASHEVILLE, NC
PERMIT NO. 287

Quarterly Meeting
Thurs, April 24th, 7:00pm

Location: St. John's Church
Agenda: Maple Dr Fund Raising Ideas
Program: Ways to Help Minimize the Mosquito Population
By Becky Smucker

Please join us for your association's quarterly meeting at 7pm on Thursday, April 24th in St. John's Episcopal Church, 290 Old Haw Creek Road. Additional parking behind building.

Tuxedo Junction's Maple Dr Park Fund Raiser GREAT Success!

In just over a week Amy Rae Stupka and her band mates of Tuxedo Junction pulled together a fund raising event for the Maple Dr park property purchase. Now that's community spirit!

120 Citizens braved the weather and filled the dance floor at Evergreen Community Charter School during the dance/concert fund raiser. The festive event raised nearly \$2,000 toward the Maple Drive park and helped raise awareness in the greater community about this important project. For more information about the project see our website and past newsletters. Or contact a HCCA board member.



Some of the many dancers enjoying Tuxedo Junctions sounds.



Tuxedo Junction warms up the crowd!

Sidewalks Coming to New Haw Creek Rd.

Construction is underway for the first segment of sidewalk along New Haw Creek Road. Running along the south side of the road, the sidewalk will stretch between Beverly and Arco Rd. Estimated time of construction is 3-4 months. On the map at the right see the black line, this is the new construction that will line to existing sidewalks marked in gray.

